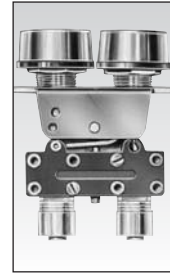
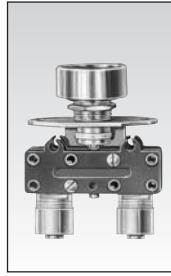


# Manual Control Valves for 1/2" (12mm) hole size



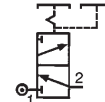
**1**

## Part Number

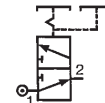
| Features |    | Round push button | Round double push button |
|----------|----|-------------------|--------------------------|
| Version  | NC | black             | 81 735 511               |
|          |    | red               | 81 735 512               |
|          |    | black/red         | —                        |
| NO       |    | black             | 81 735 011               |
|          |    | red               | —                        |
|          |    | black/red         | —                        |
|          |    |                   | 81 733 511               |

## Symbol

NC



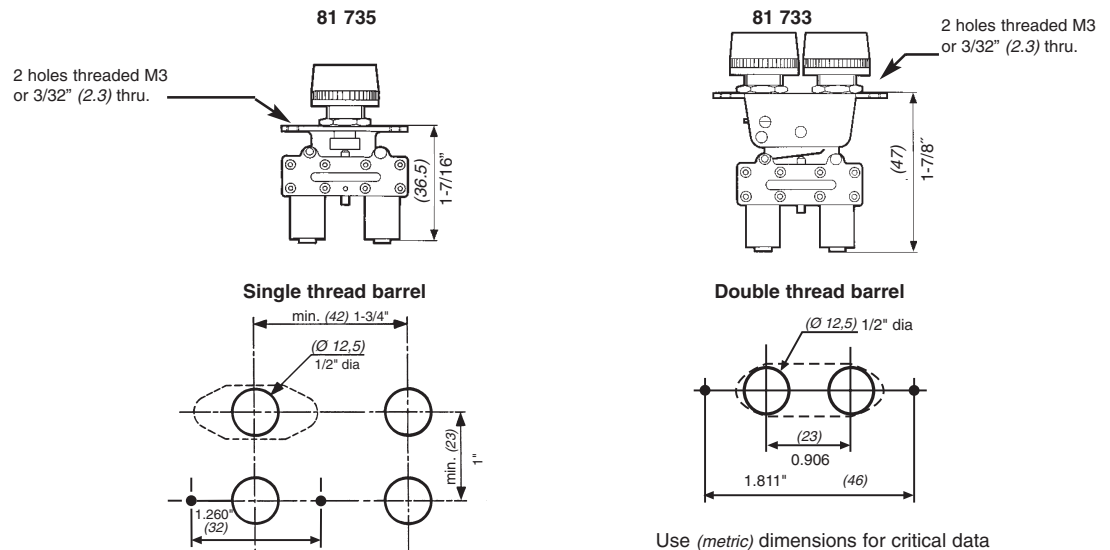
NO



## Characteristics

|   |                          |                       |                       |
|---|--------------------------|-----------------------|-----------------------|
| Operating Pressure  | PSI (bar)                | 30 > 120 (2 > 8)      | 30 > 120 (2 > 8)      |
| Internal orifice  | inches (mm)              | 0.106" (2.7)          | 0.106" (2.7)          |
| Flow @ 90 PSI (6 bar)                                     | cfm (Nm <sup>3</sup> /h) | 7 (200)               | 7 (200)               |
| Valve   | NC : black<br>NO : grey  | ●                     | ●                     |
| Operating force   | lbs. (N)                 | 2 > 4 (8 > 18)        | 2 > 4 (8 > 18)        |
| Effective travel  | inches (mm)              | 0.04 (1)              | 0.04 (1)              |
| Fluid: dry or lubricated air                              |                          | ●                     | ●                     |
| Push-in connection for semi-rigid tubing O.D. (NFE 49100) | inches (mm)              | 5/32" (4)             | 5/32" (4)             |
| Operating temperature                                     | °F (°C)                  | +20 > +120 (-5 > +50) | +20 > +120 (-5 > +50) |
| Mechanical life   |                          | 1.5 million           | 1.5 million           |
| Weight  | grams                    | 35                    | 35                    |

## Dimensions



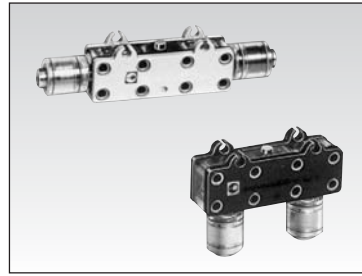
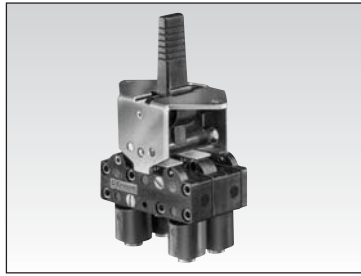
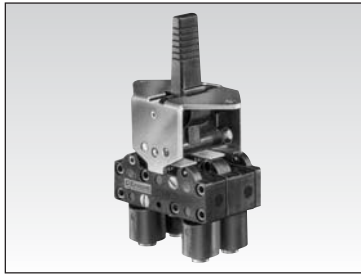
## Other Information

on request

Part Numbers. : 81 702 011 / 511 - 81 715 012 - 81 716 011 / 012 - 81 731 011 / 511 - 81 733 011  
81 734 011 / 012 / 511 / 512 - 81 735 012 - 81 752 012 / 512

Products and specifications subject to change without notice.

Order/Technical Support – Tel: (800) 677-5311 / FAX: (800) 677-3865 / www.crouzet-usa.com



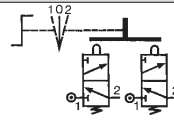
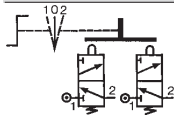
1

3 position manual return lever  
**81 716 511**  
**81 716 512**  
 —  
 —  
 —  
 —

3 position spring centered lever  
**81 715 511**  
**81 715 512**  
 —  
 —  
 —  
 —

horizontal output replacement valve  
**81 280 510**  
 —  
**81 280 010**  
 —  
 —

vertical output replacement valve  
**81 281 510**  
 —  
**81 281 010**  
 —  
 —



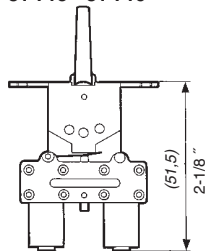
30 > 120 (2 > 8)  
 0.106" (2.7)  
 7 (200)  
 —  
 —  
 2 > 4 (8 > 18)  
 0.04 (1)  
 —  
 —  
 5/32" (4)  
 +20 >+120 (-5 >+50)  
 1.5 million  
 65

30 > 120 (2 > 8)  
 0.106" (2.7)  
 7 (200)  
 —  
 —  
 2 > 4 (8 > 18)  
 0.04 (1)  
 —  
 —  
 5/32" (4)  
 +20 >+120 (-5 >+50)  
 1.5 million  
 65

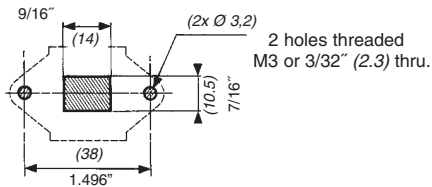
30 > 120 (2 > 8)  
 0.106" (2.7)  
 7 (200)  
 —  
 —  
 3 > 1/8 (15)  
 0.04 (1)  
 —  
 —  
 5/32" (4)  
 +20 >+120 (-5 >+50)  
 1.5 million  
 14

30 > 120 (2 > 8)  
 0.106" (2.7)  
 7 (200)  
 —  
 —  
 3 > 1/8 (15)  
 0.04 (1)  
 —  
 —  
 5/32" (4)  
 +20 >+120 (-5 >+50)  
 1.5 million  
 14

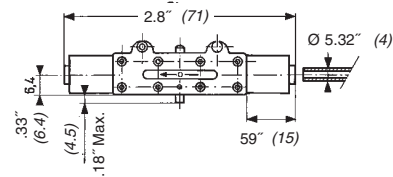
**81 715 - 81 716**



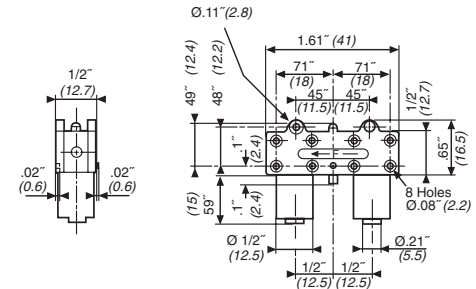
**Lever cut-out**



**81 280 010 - 81 280 510**



**81 281 010 - 81 281 510**



Use (metric) dimensions for critical data

**To order, specify:**

Standard product

**1** Part number

Standard product not stocked

Example: Round push button in black-81 735 511

5

Products and specifications subject to change without notice.

Order/Technical Support – Tel: (800) 677-5311 / FAX: (800) 677-3865 / www.crouzet-usa.com

